

ICG **INDOFINE Chemical Company, Inc.**

121 Stryker Lane, Bldg. 30, Suite 1 • Hillsborough, NJ 08844 • U.S.A.

Phone: (908) 359-6778 • FAX: (908) 359-1179

website: www.indofinechemical.com

e-mail: chemical@indofinechemical.com

CERTIFICATE OF ANALYSIS

Catalog Number: 06-1678

Product Name: **LOTUSINE**
(Lotusin B)

CAS Number: [6871-67-6]

Lot Number: 1905239

Chemical Formula: C₁₉H₂₄NO₃⁺

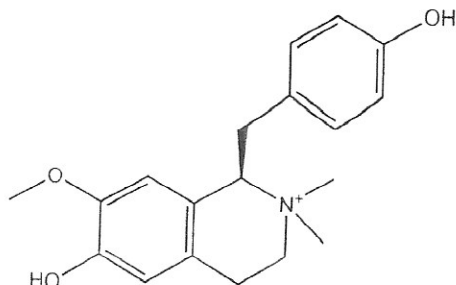
Molecular Weight: 314.40

Appearance: Off-white powder

Loss on Drying: 1.78%

Storage: Store at 2-8°C. Protect from light.

Purity(HPLC): 98.63%



Prepared by:
Ramesh Mandadi
Ramesh Mandadi
Director of Operations

Reviewed and approved by:
Sujata Moton
S. Moton
VP



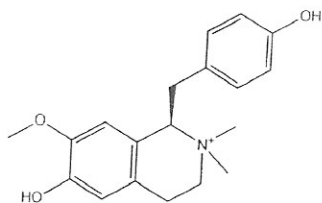
INDOFINE Chemical Company, Inc.

121 Stryker Lane, Bldg. 30

Hillsborough, NJ 08844 USA

Phone: (908) 359-6778; Fax: (908) 359-1179

HPLC ANALYSIS



Catalog No.: 06-1678

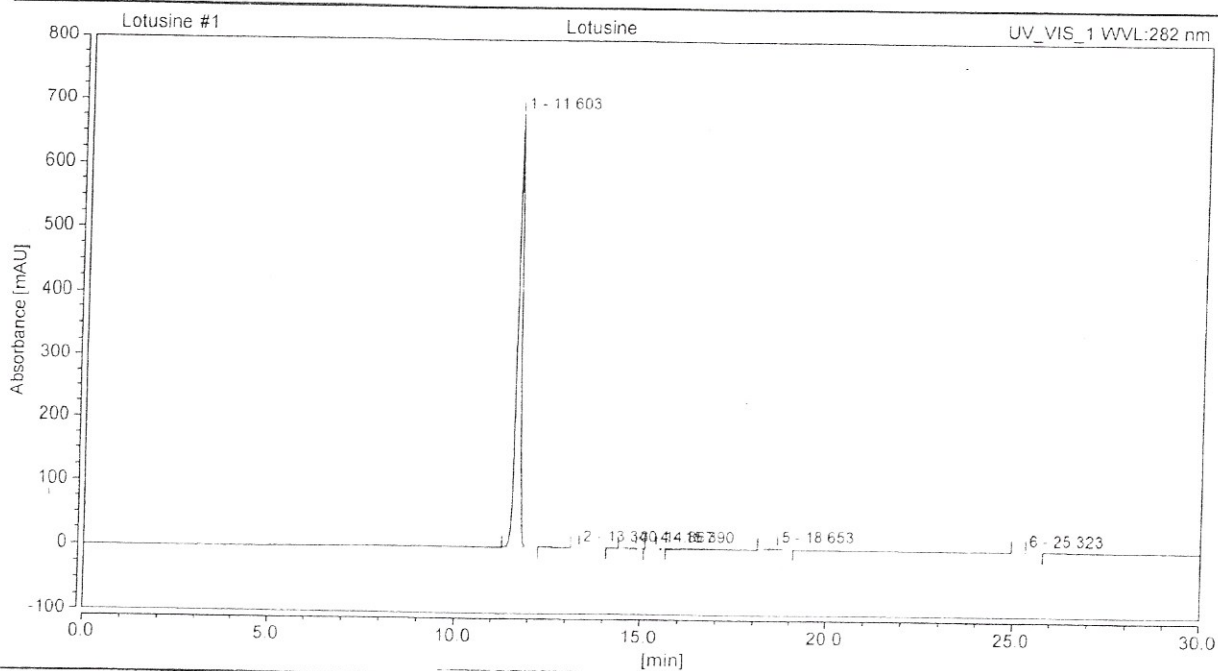
Product Name: Lotusine

Lot No.: 1905239

Injection Details

Injection Name:	Lotusine	Run Time (min):	30.00
Vial Number:	GB1	Injection Volume:	10.00
Injection Type:		Channel:	UV_VIS_1
Calibration Level:		Wavelength:	282.0
Instrument Method:	Lotusine	Bandwidth:	8
Processing Method:	Lotusine	Dilution Factor:	1.0000
		Sample Weight:	1.0000

Chromatogram



Integration Results

No	Retention Time min	Area mAU*min	Height mAU	Relative Area %	Plates (USP)	Resolution (USP)	Asymmetry
1	11.603	92.271	680.893	98.63	46038	3.58	1.27
2	13.340	0.117	0.219	0.13	5005	1.85	2.28
3	14.867	0.264	0.630	0.28	4417	0.82	0.70
4	15.390	0.106	0.446	0.11	26095	5.95	0.93
5	18.653	0.728	1.294	0.78	10861	11.58	0.85
6	25.323	0.064	0.189	0.07	53842	n.a.	0.99
Total:		93.550	683.670	100.00	146258.00		

Prepared by:

Ramesh Mandadi

Ramesh Mandadi

Director of Operations

Reviewed and Approved by:

Sujata Moton

Sujata Moton

VP